

# KINTRONICS

IP Security Solutions

Available from Kintronics,  
[www.kintronics.com](http://www.kintronics.com)  
914-944-3425

#### HEAD OFFICE

6, Pangyo-ro 319beon-gil, Bundang-gu, Seongnam-si,  
Gyeonggi-do, 13488 Rep. of KOREA  
Tel: +82.70.7147.8753 Fax: +82.31.8018.3740  
[Hanwha-Security.com](http://Hanwha-Security.com)

#### Hanwha Techwin America

500 Frank W. Burr Blvd. Suite 43 Teaneck, NJ 07666  
Toll Free: +1.877.213.1222  
Direct: +1.201.325.6920  
Fax: +1.201.373.0124  
[HanwhaSecurity.com](http://HanwhaSecurity.com)

#### Hanwha Techwin Europe

Heriot House, Heriot Road, Chertsey, Surrey, KT16 9DT, United Kingdom  
Tel: +44.1932.57.8100  
Fax: +44.1932.57.8101  
[Hanwha-Security.eu](http://Hanwha-Security.eu)

#### Hanwha Techwin Tianjin

No.11 Weiliu Rd., Micro-electronic Industrial Park,  
Jingang Road Tianjin 300385, China  
Tel: +86-22-2388-7788 (8700)  
[Hanwha-Security.cn](http://Hanwha-Security.cn)

#### Hanwha Techwin Middle East FZE

JAFZA View 18, 20th floor, office 2001, 2002, 2003,  
Downtown Jebel Ali, Dubai, United Arab Emirates  
[Hanwha-Security.com](http://Hanwha-Security.com)

#### Hanwha Techwin Singapore Branch

4 Shenton Way, #15-06, SGX Centre 2, Singapore, 068807  
Tel: +65.6221.7512  
Fax: +65.6227.9337  
[Hanwha-Security.com](http://Hanwha-Security.com)

#### Hanwha Techwin Russia Office

40/4, Bolshaya Ordynka str., Moscow, Russia, 119017  
Tel: +7.499.750.17.30  
[Hanwha-Security.eu/ru/](http://Hanwha-Security.eu/ru/)

#### Hanwha Techwin Vietnam Hanoi Office

28th Floor, Handico Building, Pham Hung Street, Me Tri ward,  
Nam Tu Liem District, Hanoi City, Vietnam  
Tel: +84.91.982.40.88  
[Hanwha-Security.com](http://Hanwha-Security.com)

© 2020 Hanwha Techwin Co., Ltd. All rights reserved.

DESIGN AND SPECIFICATIONS ARE SUBJECT TO CHANGE WITHOUT NOTICE  
Under no circumstances, this document shall be reproduced, distributed or changed,  
partially or wholly, without formal authorization of Hanwha Techwin Co., Ltd.  
FIRST EDITION 12-2019 (M.H)



**KINTRONICS**  
IP Security Solutions



**WISENET P series**  
**AI Cameras**

**KINTRONICS**  
IP Security Solutions

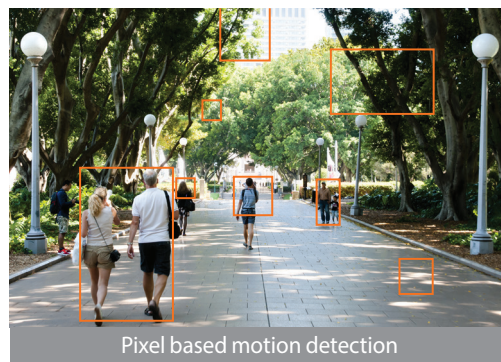
Available from Kintronics,  
[www.kintronics.com](http://www.kintronics.com)  
914-944-3425

[HanwhaSecurity.com](http://HanwhaSecurity.com)



## Increase event monitoring accuracy and operational efficiency by reducing false alarms

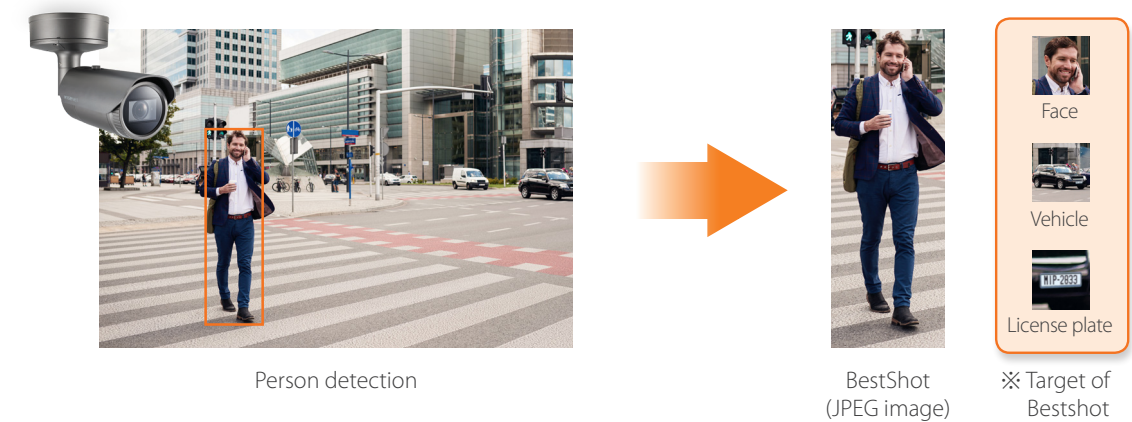
The never-ending rush of urban living translates into constant waves of people and vehicles surging through city streets at all hours. As the number of surveillance cameras grows along with the cities, an operator may be presented with too much information to handle, as conventional cameras equipped with motion-based detection generate too many event alarms. With operators under great strain to verify each one, there could be delays in response times. Now, AI algorithms built into Wisenet P series AI cameras are able to dramatically help improve operator efficiency.



## Faster forensic data search with bandwidth control

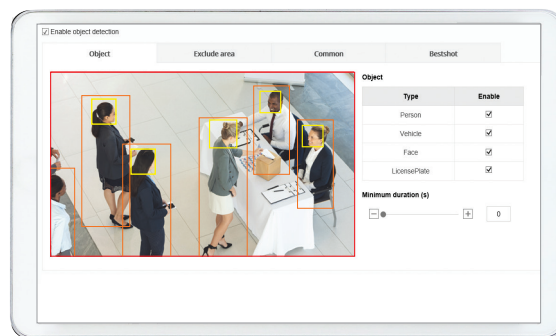
### BestShots for objects, Metadata for attributes, minimizing storage and bandwidth requirements

Wisenet P series AI cameras are equipped with the BestShot feature which ensures that only the most suitable images of classified objects are sent to the backend server. Full video image can be up to 4K resolution to see details of objects, along with tagged attributes metadata. Users have the option to set the image resolution less than 4K for full video streaming or use BestShot to minimize bandwidth and storage requirements.



## Classify Target Objects with Attributes

Wisenet P series AI cameras differentiates what it sees into broad categories such as 'Person', 'Face', 'Vehicle' and 'license plate'. Delving deeper, Wisenet AI algorithms are quickly and accurately able to identify the different attributes of the objects within the camera's field of view. For example, the camera sees a person and immediately detects the color of clothing. It is also intelligent enough to distinguish whether the person is wearing glasses or holding a bag. These attributes are then saved as metadata alongside the captured footage.



Wisenet Webviewer



## WiseStream II, optimized bandwidth solution

One of the primary issues of earlier generation AI cameras is bandwidth. In addition to BestShot, Wisenet P series AI cameras also utilize WiseStream II, **Hanwha Techwin's** complementary video compression technology which, when it is combined with H.265 technology, improves bandwidth efficiency by up to 75% compared to current H.264 technology, and without compromising image quality.



WiseStream II OFF : 7160kbps  
WiseStream II ON : 1787kbps



WiseStream II OFF : 7260kbps  
WiseStream II ON : 2901kbps



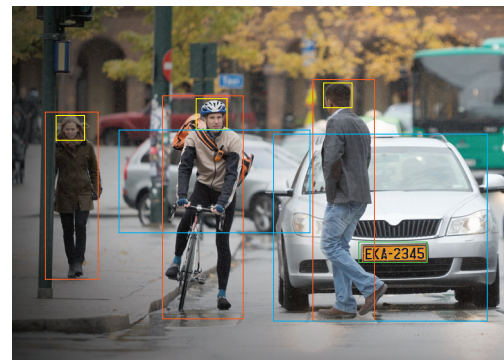
## Helping with intelligent management, as well as security

### Wisenet WAVE AI smart search

Wisenet P series AI cameras are fully supported by the Wisenet WAVE Video Management Software (VMS), enabling operators to quickly perform forensic search for specific events or for objects with defined attributes, by filtering the recorded metadata.

#### Wisenet AI Camera

Detect and classify objects real-time



\* Person, face, vehicle, license plate

Attributes,  
BestShot

#### Wisenet WAVE AI Search

Quickly search based on attributes



### Plug-in support for VMS

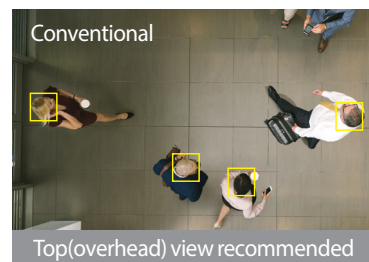
Wisenet P series AI cameras provide integration with video management system from Milestone, Genetec, and Wisenet WAVE using Hanwha's AI plugin. This plugin supports seamless integration so that users can easily search the AI metadata and events.

(Compatible models : Milestone, Genetec, Wisenet WAVE)

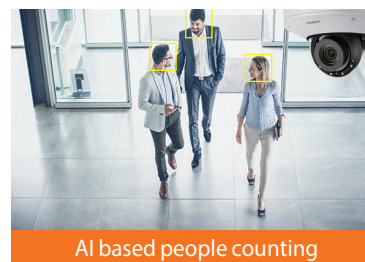


### Retail Insight v2.0, analyzing customer demographics

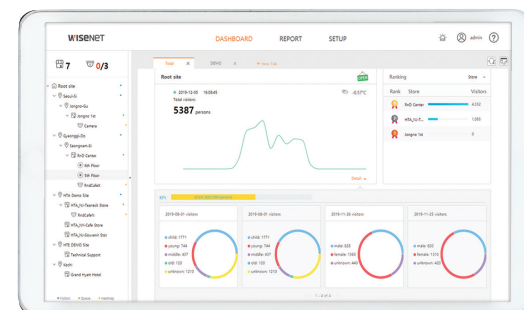
Store operators are able to combine Wisenet P series AI cameras with the Retail Insight v2.0 business intelligence application, to granularly look at what is happening within their stores, with the cameras using attribution identification to help track customer demographics, age and gender.



Top(overhead) view recommended



AI based people counting



Wisenet Retail Insight v2.0

## Clear and Sharp Image Quality

### Enhanced WDR

The enhanced WDR technology(line by line type) built into the Wisenet P series AI cameras helps produce clear images from scenes containing a challenging mix of bright and dark areas and reduces the ghost effect which can occur with conventional multi-frame WDR.



Short Expoure



WDR image



Long Expoure

### Digital PTZ

Wisenet P series AI cameras support 2 channel streaming. Channel 1 can be used for full screen video display with channel 2 simultaneously streaming the digital PTZ auto tracking of an object.



Digital auto tracking of a person

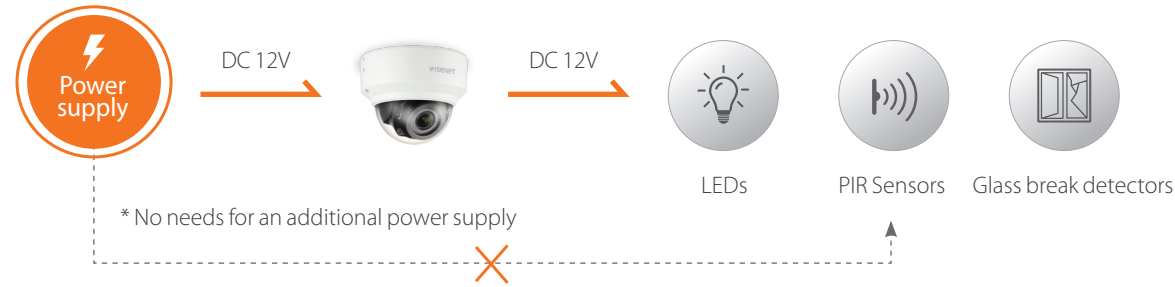
### Easy installation with modular structure

The cameras designed to significantly reduce the time normally needed for installation, set-up and maintenance adjustments. With a four-part magnetic modular design which simplifies the installation process, Wisenet P series AI cameras are equipped with a number of other practical features which help minimize the time installers have to spend on site.

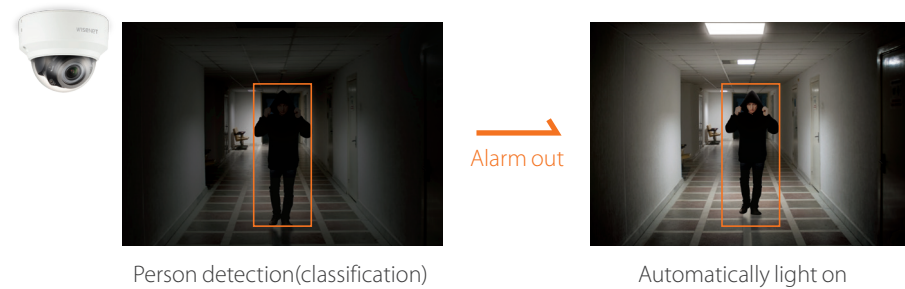


## DC output for connected devices

Wisenet P series AI cameras come with a 12V DC power supply with maximum 50mA to enable connection of sensor devices, eliminating the need for additional power supply. They also have alarm in/out ports so that connected devices such as LEDs can be activated when a camera detects (classifies) a person.

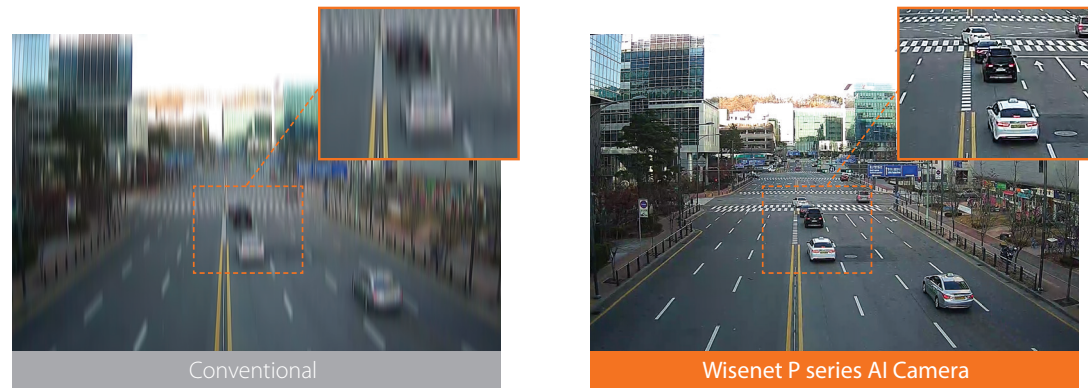


\* Example of operation scenario



## Digital Image Stabilization(DIS)with built-in gyro sensor

Advances in Wisenet image stabilisation technology allow for the reduction of motion blur caused by wind or vibration. A gyroscopic sensor plus DIS technology is specifically designed and engineered into select Wisenet P series AI cameras, resulting in sharp, stable images.



**PNO-A9081R**  
4K AI IR Bullet Camera



**PNV-A9081R**  
4K AI IR Vandal Dome Camera



**PND-A9081RV**  
4K AI IR Dome Camera

Imaging Device	1/1.8" 8MP CMOS	1/1.8" 8MP CMOS	1/1.8" 8MP CMOS
Min. Illumination	Color : 0.05Lux(F1.6) BW : 0Lux(IR LED on)	Color : 0.05Lux(F1.6) BW : 0Lux(IR LED on)	Color : 0.05Lux(F1.6) BW : 0Lux(IR LED on)
Video Output	CVBS : 1.0 Vp-p	CVBS : 1.0 Vp-p	CVBS : 1.0 Vp-p
Focal Length	4.5~10mm(2.2x) motorized varifocal	4.5~10mm(2.2x) motorized varifocal	4.5~10mm(2.2x) motorized varifocal
Angular Field of View	H: 101.4°(Wide)~45.5°(Tele) / V: 53.6°(Wide)~25.5°(Tele) / D: 120.7°(Wide)~52.3°(Tele)	H: 101.4°(Wide)~45.5°(Tele) / V: 53.6°(Wide)~25.5°(Tele) / D: 120.7°(Wide)~52.3°(Tele)	H: 101.4°(Wide)~45.5°(Tele) / V: 53.6°(Wide)~25.5°(Tele) / D: 120.7°(Wide)~52.3°(Tele)
Pan / Tilt / Rotate	-	0°~360° / -45°~85° / 0°~355°	0°~360° / -45°~85° / 0°~355°
IR Viewable Length	30m(98.42ft)	30m(98.42ft)	30m(98.42ft)
Day & Night	Auto(ICR)	Auto(ICR)	Auto(ICR)
Wide Dynamic Range	120dB	120dB	120dB
Digital Noise Reduction	SSNRV	SSNRV	SSNRV
Digital Image Stabilization	Support(built-in gyro sensor)	Support(built-in gyro sensor)	Support(built-in gyro sensor)
Analytics	Object detection (Person/Vehicle/Face/License plate), Audio detection, Sound classification	Object detection (Person/Vehicle/Face/License plate), Audio detection, Sound classification	Object detection (Person/Vehicle/Face/License plate), Audio detection, Sound classification
Business Intelligence	People counting, Queue management, Heatmap	People counting, Queue management, Heatmap	People counting, Queue management, Heatmap
Alarm I/O	1 / 1	1 / 1	1 / 1
Audio I/O	Line in / Line out	Line in / Line out	Line in / Line out
Video Compression	H.265, H.264, MJPEG	H.265, H.264, MJPEG	H.265, H.264, MJPEG
Resolution / Max. Frame Rate	8MP/30fps	8MP/30fps	8MP/30fps
WiseStream	WiseStream II	WiseStream II	WiseStream II
Streaming	Up to 3 profiles	Up to 3 profiles	Up to 3 profiles
Edge Storage	Micro SD/SDHC/SDXC	Micro SD/SDHC/SDXC	Micro SD/SDHC/SDXC
Application Programming Interface	ONVIF Profile S/G/T SUNAPI(HTTP API) Wisenet open platform	ONVIF Profile S/G/T SUNAPI(HTTP API) Wisenet open platform	ONVIF Profile S/G/T SUNAPI(HTTP API) Wisenet open platform
Operating Temperature	-40°C ~ +55°C (-40°F ~ +131°F) * Start up above -30°C	-40°C ~ +55°C (-40°F ~ +131°F) -40°C ~ +60°C (-13°F ~ +140°F) * Start up above -30°C	-25°C ~ +50°C (-13°F ~ +122°F) / IR LED on -25°C ~ +55°C (-13°F ~ +131°F) / IR LED off
Certification	IP66/IP67, IK10, NEMA4X	IP66/IP67/IP6K9K, IK10+, NEMA4X	IP52, IK10
Power Consumption	PoE+: Max 20.0W, typical 17.00W 12VDC: Max 18.00W, typical 16.00W	PoE+: Max 20.00W, typical 17.00W 12VDC: Max 18.70W, typical 15.00W	PoE+: Max 20.00W, typical 16.00W 12VDC: Max 17.70W, typical 14.00W
Dimensions (WxHxD) / Weight	Ø91.0 x 368.6mm (3.58" x 14.51") (Without sunshield), Weight : 2.48Kg (5.47lb)	Ø180 x 125mm(7.09" x 4.92"), Weight : 1.90Kg (4.19lb)	Ø160 x 125mm(6.30" x 4.92"), Weight : 1.60Kg (3.53lb)
Additional Features	AI : BestShot, Attributes (Person, Vehicle, Face, License plate)	AI : BestShot, Attributes (Person, Vehicle, Face, License plate)	AI : BestShot, Attributes (Person, Vehicle, Face, License plate)



**PND-A9081RF**  
4K AI IR Dome Camera



**PNB-A9001**  
4K AI Box Camera

Imaging Device	1/1.8" 8MP CMOS	1/1.8" 8MP CMOS
Min. Illumination	Color : 0.05Lux(F1.6) BW : 0Lux(IR LED on)	Color : 0.03Lux(F1.2, 1/30sec)
Video Output	CVBS : 1.0 Vp-p	CVBS : 1.0 Vp-p
Focal Length	4.5~10mm(2.2x) motorized varifocal	-
Angular Field of View	H: 101.4°(Wide)~45.5°(Tele) / V: 53.6°(Wide)~25.5°(Tele) / D: 120.7°(Wide)~52.3°(Tele)	-
Pan / Tilt / Rotate	0°~360° / -45°~85° / 0°~355°	-
IR Viewable Length	30m(98.42ft)	-
Day & Night	Auto(ICR)	Auto(ICR)
Wide Dynamic Range	120dB	120dB
Digital Noise Reduction	SSNRV	SSNRV
Digital Image Stabilization	Support(built-in gyro sensor)	Support(built-in gyro sensor)
Analytics	Object detection (Person/Vehicle/Face/License plate), Audio detection, Sound classification	Object detection (Person/Vehicle/Face/License plate), Audio detection, Sound classification
Business Intelligence	People counting, Queue management, Heatmap	People counting, Queue management, Heatmap
Alarm I/O	1 / 1	1 / 1
Audio I/O	Line in / Line out	Line in / Line out
Video Compression	H.265, H.264, MJPEG	H.265, H.264, MJPEG
Resolution / Max. Frame Rate	8MP/30fps	8MP/30fps
WiseStream	WiseStream II	WiseStream II
Streaming	Up to 3 profiles	Up to 3 profiles
Edge Storage	Micro SD/SDHC/SDXC	Micro SD/SDHC/SDXC
Application Programming Interface	ONVIF Profile S/G/T SUNAPI(HTTP API) Wisenet open platform	ONVIF Profile S/G/T SUNAPI(HTTP API) Wisenet open platform
Operating Temperature	-25°C ~ +50°C (-13°F ~ +122°F) / IR LED on -25°C ~ +55°C (-13°F ~ +131°F) / IR LED off	-10°C ~ +55°C (+14°F ~ +131°F)
Certification	IP52, Plenum rated	-
Power Consumption	PoE+: Max 20.00W, typical 16.00W 12VDC: Max 17.70W, typical 14.00W	PoE+: Max 16.50W, typical 12.50W 12VDC: Max 13.50W, typical 10.80W
Dimensions (WxHxD) / Weight	Ø205 x 163mm(8.07" x 4.92"), Weight : 1.95Kg (4.30lb)	73.1 x 66.6 x 147.8mm, Weight : 0.70Kg (1.54lb)
Additional Features	AI : BestShot, Attributes (Person, Vehicle, Face, License plate)	AI : BestShot, Attributes (Person, Vehicle, Face, License plate)

## Memo

**KINTRONICS**  
IP Security Solutions